

## 4 Nolan Court, Watlington PE33 0JP

£209,995

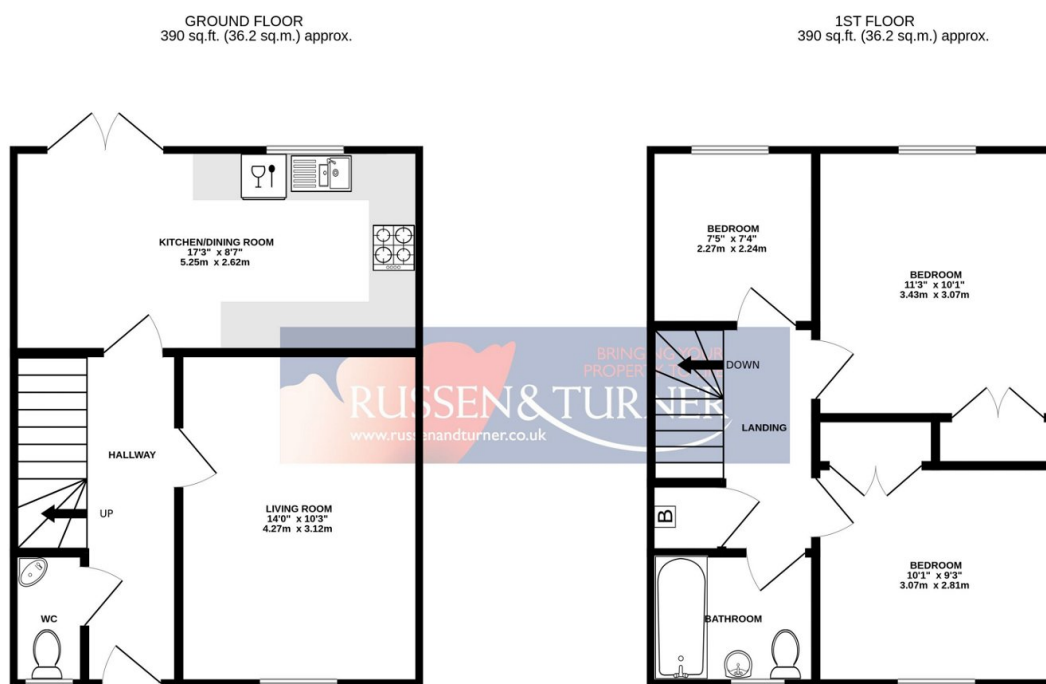
 3  1  2



**PERFECT FIRST HOME!** Just over a mile from the train station, this modern, end of terrace home is ready to move straight into. Set within a small close, the property offers bright and airy, well proportioned accommodation, gas central heating and allocated parking. A great first step on the property ladder.

## Key Features

- End of Terrace House
- Modern Home
- Allocated Off-road Parking
- Ideal First Home
- Sought After Village
- Three Bedrooms
- Well Presented - Ready to Move Straight Into
- Private Rear Garden
- Gas Central Heating
- Close to Train Station



TOTAL FLOOR AREA: 780 sq.ft. (72.4 sq.m.) approx.

Whilst every attempt has been made to ensure the accuracy of the floorplan contained here, measurements of doors, windows, rooms and any other items are approximate and no responsibility is taken for any error, omission or mis-statement. This plan is for illustrative purposes only and should be used as such by any prospective purchaser. The services, systems and appliances shown have not been tested and no guarantee as to their operability or efficiency can be given.

Made with Metropix 62024